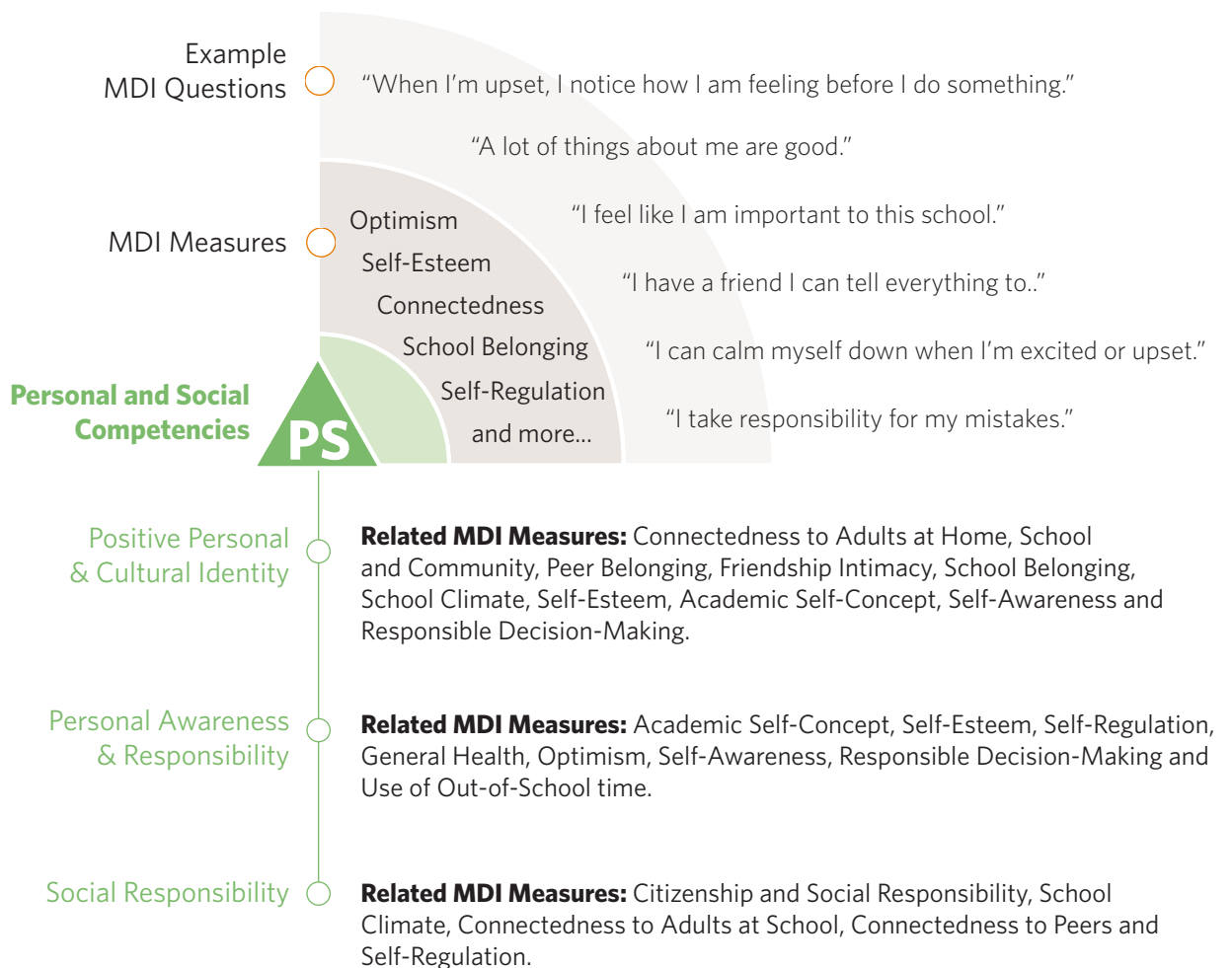


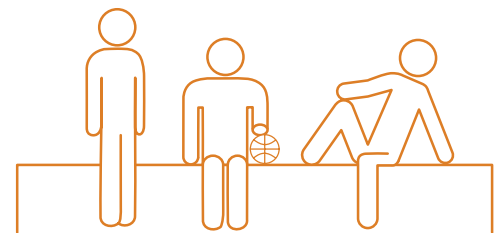
Did you know that the MDI asks children questions related to **Personal and Social Competencies**?

Your MDI data provide a unique approach to understanding children's social and emotional development and well-being in relation to the **BC Ministry of Education's Personal and Social Competencies**. MDI data do not provide an individual assessment of children. Instead, these data provide a snapshot of how groups of children are doing across important areas of development in our schools and communities.

As illustrated below, areas measured by the MDI reflect facets of children's Personal and Social Competencies, providing valuable context for understanding children's growth and progress on the core competencies.



For a compilation of these measures and other data provided through student self-assessment, see your MDI reports. For more information visit discovermdi.ca.



Ideas for making change with MDI results

MDI data can be used as a powerful tool for catalyzing inquiry and instigating further exploration of ways to promote children's personal and social competencies in the classroom, in schools, and with parents and caregivers, educators and leaders in the community. Consider the following opportunities for using MDI data:

Understand your MDI Results



MDI reports provide information about the social and emotional lives, well-being, and assets of children in classrooms, schools, and communities. They shine a light on how children are doing on various dimensions of the BC Ministry of Education's Personal and Social Competencies. Approach your MDI results with a lens of curiosity, inquiry, and appreciation for the dimensions of personal and social competence on which your children are doing well. Discuss your results with colleagues and with children and use your MDI results to spark new conversations.

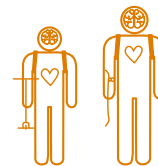
The **MDI Field Guide** at discovermdi.ca can help walk you through how to read the results and provide background information during your meaning-making process.



Engage Many

Creating school and classroom cultures that support children's personal and social competence requires everyone to be involved. Indeed, it's true that, 'it takes a village to raise a child.' Once you are ready, share your MDI data and report with children, parents and elders, caregivers and teachers, school administrators, after-school programmers, local early/middle childhood committees, local government, and other community stakeholders. All of these groups can help to deepen understanding about children's personal and social competence and suggest pathways for action and change.

Choose a Focus: Think BIG, Start Small



It may be overwhelming to consider the many opportunities for promoting positive change presented in your MDI data, especially as you also consider how to address the dimensions of personal and social competencies in the BC Ministry of Education's revised curriculum. Where will your focus be? What are the dimensions on the MDI on which your children are doing well? What are the dimensions on the MDI on which your children seem to be in need of improvement? What results do you have some control or influence over? How will you make change? We suggest narrowing your efforts to one or two key focus areas for improvement. Develop a plan and strategic direction, then implement your plan and see where it takes you! Make sure that you develop ways to assess whether your plan is working and identify measures of success and ways to celebrate your accomplishments.

Action Everywhere: Be Inspired and Learn from Others



Innovation happens when people build on ideas, rather than simply duplicating them. Identify individuals in school and community settings who are championing social and emotional learning, mental health and well-being, and middle childhood issues.

The **MDI Field Guide** includes stories from School Districts about how teachers and schools are using MDI data to support them. Explore the growing collection of video stories, downloadable tools and action articles in the MDI Field Guide. Be inspired, edit, adapt or create new! You can even record your own story as you get started with action: discovermdi.ca